

Precision. Clarity. Power.

Experience the cutting-edge prowess of PTZOptics Move 4K, boasting 4K 60fps auto-tracking, simultaneous outputs, and versatile control options. Seamlessly integrate with leading video production software like OBS, vMix, and Wirecast for an unparalleled live streaming experience.



12x 30x
20x
Models



Auto-Tracking & Auto-Framing: Enable auto-tracking or auto-framing, perfect for education, conferences, live broadcasts, and more.

Multiple Control Options: IR remote, network connection, RS-232, RS-485, Web UI, PTZ Control App, USB port, and Camera Management Platform.

Simultaneous Outputs: NDI, USB, & IP with either SDI or HDMI

4K Ultra HD: Next generation SONY UHD CMOS sensor for shooting high-quality 4K video at 60 FPS. Adjustable to numerous other resolutions and frame rates.

Simple Network Discovery: Easily discover and connect to a network.

Built-in Tally Light: Indicates if the camera is live or in preview mode.



What's in the Box:

Move 4K Camera
AC Power Supply
USB A-A Cable

RS232C Cable
Quick Start Guide
IR Remote

2 AA Batteries
Lens cap

Models (GY = Gray, WH = White RD = Red)	PT12X-4K-GY-G3 PT12X-4K-WH-G3	PT20X-4K-GY-G3 PT20X-4K-WH-G3 PT20X-4K-RD-G3	PT30X-4K-GY-G3 PT30X-4K-WH-G3
Lens	(12X) Sony 1/2.5 inch, CMOS (20X) Sony 1/1.8 inch, CMOS (30X) Sony 1/1.8 inch, CMOS		
Image Sensor	(12X) 8.51MP, Effective Pixels: 8.29 (20X & 30X) 8.42MP, Effective Pixels: 8.29		
Optical Lens Focal Length (Zoom)	(12X) f = 4.4mm ~ 52.8mm, F1.8 ~ F2.6		
	(20X) f = 6.25mm ~ 125mm, F1.58 ~ F3.95		
	(30X) f = 7.1mm ~ 210mm, F1.61 ~ F5.19		
Maximum Tracking Distance	(12X) 200'		
	(20X) 250'		
	(30X) 300'		

Optical Lens Field of View	(12X) H 6.9° ~ 72.5° V 3.9° ~ 44.8°
Horizontal & Vertical	(20X) H 3.5° ~ 60.7° V 1.9° ~ 34.1°
	(30X) H 2.5° ~ 59.2° V 1.4° ~ 34.6°
Display Field of View	(12X) 80.2°
	(20X) 67.8°
	(30X) 66.2°
Resolution and Frame Rate	HDMI/IP/NDI/USB: 3840x2160p-60/59.94/50/30/29.97/25 1920x1080p-60/59.94/50/30/29.97/25 1280x720p-60/59.94 1024x576, 720x480, 720x408, 640x480, 640x360 -60/59.94/50/30/29.97/25
	SDI: 1920x1080p-60/59.94/50/30/29.97/25 1920x1080i-60/59.94/50 1280x720p-60/59.94 1024x576, 720x480, 720x408, 640x480, 640x360 -60/59.94/50/30/29.97/25
	HDMI & SDI 1920x1080i-60/59.94/50
Min Lux	0.5 Lux @ (F1.8, AGC ON)
Shutter	1/30s ~ 1/10000s
Pan Movement Range	±170°
Tilt Movement Range	-30° ~ +90°
Pan Speed	0.7°/s ~ 100°/s
Tilt Speed	0.7°/s ~ 69.9°/s
Presets	255 Presets
Preset Accuracy	0.1°
Image Flip, Mirror, and Freeze	Supported
Physical Specifications	
Material	Aluminum, Plastic
Color	Gray, White

Dimensions (W x D x H)	(12X) 5.57" W x 6.65" D x 7.91" H / 141.5 W x 169 D x 201 H mm
	(20X) 5.57" W x 6.65" D x 7.91" H / 141.5 W x 169 D x 201 H mm
	(30X) 6.69" W x 7.12" D x 8.98" H / 170 W x 181 D x 228 H mm
Weight	(12X) 3.25 lbs (1.47 kg)
	(20X) 3.25 lbs (1.47 kg)
	(30X) 4.41lbs (2.0 kg)
Working Environment	Indoor
Humidity Range	10% - 80%
Operating Temperature	14°F ~ 104°F (-10°C ~ 40°C)
Storage Temperature	-40°F ~ 140°F (-40°C ~ 60°C)
Connections	
HD Video Output	1x RJ45: 10/100/1000M Adaptive Ethernet Port NDI HX enabled
	1x HDMI: version 2.0
	1x 3G-SDI: BNC type, 800mVP-p, 75Ω, Along to SMPTE 424M, standard
	1x USB 2.0 Type A
Compression Standards	YUY2 / MJPEG / H.264 / H.265
Audio Interface	1x 3.5mm Line level Input
Communication Interface	1x 8-pin Mini DIN RS232 Input, Max distance: 98.5ft / 30m, Protocol: VISCA / Pelco-D / Pelco-P
	1x 8-pin Mini DIN RS232 Output, Max distance: 98.5ft / 30m, Protocol: VISCA / Pelco-D / Pelco-P
	1x 2-pin Phoenix port RS485 Input / Output, Max distance: 3,937ft / 1200m, Protocol: VISCA / Pelco-D / Pelco-P
IR	4x IR Addresses, Max distance 30ft / 9m
Power Supply	JEITA type (DC IN 12V) / PoE (802.3af)
Current Consumption	Max 1.0A

NDAA Compliant

Pan Tilt Zoom Cameras



[Move 4K](#)



[Link 4K](#)



[Move SE](#)

Box Cameras

Joysticks



[Studio Pro](#)



[Studio SE](#)
Coming soon



[Studio 4K](#)



[SuperJoy](#)



[PTJOY](#)



[HCJOY](#)

Camera Mounts

Wall Mounts

Ceiling Mounts

Pole Mounts



[HCM-1-BK](#)
[HCM-1-WH](#)



[HCM-2-BK](#)
[HCM-2-WH](#)



[PT-WM-3-BK](#)
[PT-WM-3-WH](#)
For
30X Models



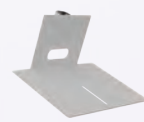
[PT-CM-1-BK](#)
[PT-CM-1-WH](#)



[PT-CM-3-BK](#)
[PT-CM-3-WH](#)



[HCM-1C-WH](#)



[HCM-2C-WH](#)



[PT-PM-3-WH](#)

For
30X Models

Software



[Hive Studio](#)



[PTZOptics
Q-SYS Control
Plugin](#)

[Camera
Management
Platform](#)



[PTZ
Control Pro 2](#)

[Click here to see our full list of
Integration Partners](#)