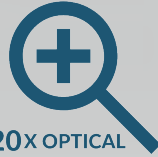
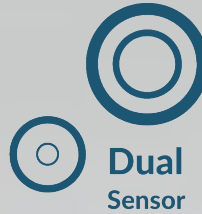


Tracking Made Simple

Built with an advanced dual sensor system, the 1080p 60fps SimplTrack3 provides a high-precision auto-tracking mode and an intuitive auto-framing mode for a wide variety of applications.



20X OPTICAL



Dual Sensor



Auto Tracking Mode



Auto Framing Mode



Motion & Facial Tracking allows speedy presenter recognition no matter the use case.

Customizable Zones Outline your tracking or framing space. Create preset zones to hold the camera's position or trigger an HTTP command whenever your talent enters them.

Simultaneous Outputs: HDMI, SDI, NDI, USB, IP

Facial Framing centers the camera on single or multiple participants. While the reference lens accounts for participants, the main lens frames them.

Dual Sensor Total Stage Awareness
The SimplTrack3 can send a wide-angle video feed from the reference lens and a close-up framing shot from the main lens simultaneously.



What's in the Box:

HC20X-SIMPLTRACK3
 AC Power Supply
 USB B-A Cable

RS232C Cable
 Quick Start Guide
 IR Remote

2 AA Batteries

Camera & Lens

Optical Lens Video Sensor	(20X) Sony 1/2.8 inch, CMOS, Effective pixels: 2.14M
Resolution and Frame Rate	HDMI, SDI 1080p60 / 50 USB, NDI HX 1080p60, 1080p30, 720p30, 360p30
Optical Lens Focal Length	(20X) f = 4.7mm ~ 94mm, F1.6 ~ F3.5
Display Field of View	Lens: 71.0° Reference Lens: 101.0°
Optical Lens Field of View	Horizontal 3° ~ 59.5° Vertical 2° ~ 36°
Reference Lens Video Sensor	1/2.8"
Reference Lens Focal Length	2.14 Mega Pixel, 2.4mm
Reference Lens Field of View	Horizontal 86° Vertical 52°
Min Lux	0.5 Lux @ (F1.8, AGC ON)
Shutter	1/1s ~ 1/10000s
Pan Movement Range	±170°
Tilt Movement Range	-30° ~ +90°
Pan Speed	0.1°/s ~ 120°/s
Tilt Speed	0.1°/s ~ 90°/s

Presets	255 Presets
Preset Accuracy	0.1°
Image Flip	Not Supported
Image Mirror	Supported
Image Freeze	Not Supported
Physical Specifications	
Material	Aluminum, Plastic
Color	Gray
Dimensions (W x D x H)	W 9.6" x D 6.1" x H 6.4" (W 243mm x D 157mm H 163mm)
Weight	5.7 lbs (2.59 kg)
Working Environment	Indoor
Humidity Range	10% - 80%
Operating Temperature	32°F ~ 104°F (0°C ~ 40°C)
Storage Temperature	-4°F ~ 140°F (-20°C ~ 60°C)
Connections	
HD Video Output	1x RJ45: 10/100M Adaptive Ethernet Port NDI HX enabled
	1x HDMI: version 2.0
	1x 3G-SDI: BNC type, 800mVP-p, 75Ω, Along to SMPTE 424M, standard
	1x USB 3.0 Type B
Audio Interface	1x 3.5mm Line level Input
Communication Interface	1x 8-pin Mini DIN RS232 Input, Max distance: 98.5ft / 30m, Protocol: VISCA / Pelco-D / Pelco-P
	1x 8-pin Mini DIN RS232 Output, Max distance: 98.5ft / 30m, Protocol: VISCA / Pelco-D / Pelco-P
IR	4x IR Addresses, Max distance 30ft / 9m
Power Supply	JEITA type (DC IN 12V) / PoE (802.3af)
Current Consumption	Max 1.0A

NDAA Compliant

Pan Tilt Zoom Cameras



[Move 4K](#)



[Link 4K](#)



[Move SE](#)

Box Cameras

Joysticks



[Studio Pro](#)



[Studio SE](#)
Coming soon



[Studio 4K](#)



[SuperJoy](#)



[PTJOY](#)



[HCJOY](#)

Camera Mounts

Wall Mounts

Ceiling Mounts

Pole Mounts



[HCM-1-BK](#)
[HCM-1-WH](#)



[HCM-2-BK](#)
[HCM-2-WH](#)



[PT-WM-3-BK](#)
[PT-WM-3-WH](#)
For
30X Models



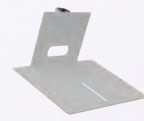
[PT-CM-1-BK](#)
[PT-CM-1-WH](#)



[PT-CM-3-BK](#)
[PT-CM-3-WH](#)
For
30X Models



[HCM-1C-WH](#)



[HCM-2C-WH](#)



[PT-PM-3-WH](#)
For
30X Models

Software



[Hive Studio](#)



[Camera
Management
Platform](#)



[PTZ
Control Pro 2](#)

[PTZOptics
Q-SYS Control
Plugin](#)

[Click here to see our full list of
Integration Partners](#)